

K5P/56M.9006.Z2



ATEX ZONE 22, 2

POUSSIÈRE NON CONDUCTRICE

ASPIRATEUR INDUSTRIEL pour PROCESS

Les aspirateurs de la gamme KF sont des aspirateurs polyvalents, adaptés à l'aspiration de tous types de poussières.

Ces aspirateurs sont insonorisés et équipés d'une unité aspirante triphasée sans entretien, permettant une aspiration 24 h/24.

Les K5P/56M.9006.Z2 sont également dotés de filtres hygiéniques de grande surface et sont déclinables en version ATEX afin de travailler dans des atmosphères explosives.

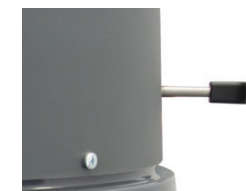
Les principales applications des aspirateurs KF sont : les machines d'usinage de précision et d'assemblage, les machines de conditionnement, ainsi que les secteurs de la production alimentaire, cosmétique et pharmaceutique.



Puissance	7,5 KW
Tension	400 V 50 Hz
Dépression maximal	3.000 mmH ² O
Débit d'air maximum	536 m ³ /h
Capacité de la cuve	90 l



Indicateur de colmatage



Système de décolmatage ergonomique



OPTION : Bras d'aspiration



Option : Filtre absolu en amont (HEPA) avec filtre M

K5P/56M.9006.Z2



ATEX ZONES 22, 2
NO CONDUCTIVE DUST



GENERAL FEATURES

- Overheating safety relief valve
- Antistatic wheels
- H filtration for hazardous dust vacuuming upon request

TECHNICAL DATA

		50 Hz	60 Hz
Power	kW - HP	7,5 - 10,1	8,6 - 11,5
Input voltages Y ¹⁾	V	690	---
Current Y	A	7,3	---
Input voltages D ¹⁾	V	400	460
Current D	A	13,1	13
Electric protection ^{a)}		IP55	
Default factory setting	V Hz	400 50	
Electrical cable:			
type		4G2,5 H07RN-F	
length	m	9	
plug		Not supplied	
Insulation class ^{b)}		F	
Energetic class ^{c)}		IE3	
ATEX Mark ^{d)}		II3GD Ex dc h IIB T3 Gc - h tc IIIB T 125°C Dc	
Maximum vacuum	mmH ₂ O	3.000	3.700
	mbar	300	370
Nominal vacuum ²⁾	mmH ₂ O	2.400	2.600
	mbar	240	260
Maximum air flow	l/min	8.933	10.333
	m ³ /h	536	620
Acoustic level ^{e)}	dB (A)	74	78
Environmental working temperature	°C	5 ÷ 40	
Dust bin capacity	l	90	
Wheels material		Rubber	
Weight	kg	197	
Packing weight	kg	212	
Dimensions - L x W x H (H .005 H .008)	mm	1.220 x 620 x 1.770 (1.970 - 2.070)	
Packing size - L x W x H (H .005 H .008)	mm	1.600 x 800 x 1.880 (2.080 - 2.180)	
Diameters:			
material inlet	mm	70	
wheels: chassis	mm	150 - 200	
wheels: bin	mm	60	

FILTRATION DATA

	Default primary star filter		
	Surface area	cm ² - m ²	35.000 - 3,5
	Diameter	mm	560
	Dust Class ^{f)} Media ³⁾		M Antistatic polyester
	Filter cleaning		Ergonomic manual filter shaker
	Optional primary filter - cartridges kit - Variant (.008)		
	Surface area Diameter	cm ² - m ² mm	94.800 - 9,48 560
	Dust Class ^{f)} Media		M Antistatic polyester
	Compressed air consumption pressure	nl/min bar	48 4 ÷ 6
	Filter cleaning		Automatic cleaning system
	Upstream absolute filter - Variant 005		
	Surface area	cm ² - m ²	52.000 - 5,2
	Media		Glass fibre
	Dust Class ^{g)}		H14
	Efficiency M.P.P.S. ^{g) 4)}		99,995%
	Downstream absolute filter - Variant 045		
	Surface area	cm ² - m ²	82.000 - 8,2
	Media		Glass fibre
	Dust Class ^{g)}		H14
	Efficiency M.P.P.S. ^{g) 4)}		99,995%

Normatives: a) IEC60529; b) IEC600085; c) IEC60034-2-1; d) 2014/34/UE; e) EN60704-2-1; f) EN60335-2-69; g) EN1822

Notes:

¹⁾ Other input voltages upon request

²⁾ Maximum vacuum in continuous run

³⁾ Other materials available according to the material to be vacuumed

⁴⁾ With 0,18 µm particles

⁵⁾ "Pharma finishing": AISI 316L cleaned welding and inner mirror polished

MACHINE

K5P/56M.9006.Z2	7,5 kW, 90 l capacity, grey RAL 9006 painted, 560 mm diameter three phase industrial vacuum cleaner
K5P/56M.9006.Z2-60Hz	8,6 kW, 90 l capacity, grey RAL 9006 painted, 560 mm diameter three phase industrial vacuum cleaner

OUTFITS

001	AISI 304 stainless steel dust bin	I
001P	AISI 316L stainless steel dust bin - Pharma finishing ⁵⁾	
002	AISI 304 stainless steel dust bin and filtering chamber	I
002P	AISI 316L stainless steel dust bin and filtering chamber - Pharma finishing ⁵⁾	
003	Entirely made out of AISI 304 stainless steel	
003P	AISI 304 stainless steel completely made with AISI 316L stainless steel dust bin and filtering chamber - Pharma finishing ⁵⁾	
005	Upstream absolute filter (HEPA)	
005SS	Upstream absolute filter (HEPA) - version: AISI 304 stainless steel	
005P	Upstream absolute filter (HEPA) - version AISI 316 stainless steel - Pharma finishing ⁵⁾	
006	Electric filter shaker with push-button	
006A	Automatic electric filter shaker	
007	Pneumatic filter shaker with push-button	
007A	Automatic pneumatic filter shaker (adjustable at switch on or at switch off)	
008	Automatic reverse jet cartridge filtering system	
008SS	Automatic reverse jet cartridge filtering system - version: AISI 304 stainless steel	
008P	Automatic reverse jet cartridge filtering system - version: AISI 316L stainless steel - Pharma finishing ⁵⁾	
045	Downstream absolute filter (HEPA) - version: painted	
045SS	Downstream absolute filter (HEPA) - version: AISI 304 stainless steel	
066	Bin overfilling machine switch off	
104	Remote on/off switch arrangement through dry contact onto processing machine electric control panel	
603	Disposal bag vacuum balance system for dust collection directly into plastic bags	