

ASPIRATEUR INDUSTRIEL pour PROCESS

Les aspirateurs de la gamme KF sont des aspirateurs polyvalents, adaptés à l'aspiration de tous types de poussières.

Ces aspirateurs sont insonorisés et équipés d'une unité aspirante triphasée sans entretien, permettant une aspiration 24 h/24.

Les KF30M.021 sont également dotés de filtres hygiéniques de grande surface et sont déclinables en version ATEX afin de travailler dans des atmosphères explosives.

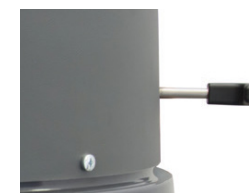
Les principales applications des aspirateurs KF sont : les machines d'usinage de précision et d'assemblage, les machines de conditionnement, ainsi que les secteurs de la production alimentaire, cosmétique et pharmaceutique.



Puissance	4,0 KW
Tension	400 V 50 Hz
Dépression maximal	3.200 mmH ² O
Débit d'air maximum	341 m ³ /h
Capacité de la cuve	50 l



Indicateur de colmatage



Système de décolmatage ergonomique



OPTION : Bras d'aspiration



Option : Filtre absolu en amont (HEPA) avec filtre M

KF30M.021



ATEX ZONE 21



GENERAL FEATURES

- Overheating safety relief valve
- Antistatic wheels
- H filtration for hazardous dust vacuuming upon request

TECHNICAL DATA

		50 Hz	60 Hz
Power	kW - HP	4,0 - 5,4	4,55 - 6,1
Input voltages Y ¹⁾	V	690	---
Current Y	A	4,7	---
Input voltages D ¹⁾	V	400	460
Current D	A	8,1	7,9
Electric protection ^{a)}		IP65	
Default factory setting	V Hz	400 50	
Electrical cable:			
type		4G2,5 H07RN-F	
length	m	6	
plug		Not supplied	
Insulation class ^{b)}		F	
Energetic class ^{c)}		IE3	
ATEX Mark ^{d)}		II2D - Ex h tb IIICT 125°C Db	
Maximum vacuum	mmH ₂ O	3.200	4.000
	mbar	320	400
Nominal vacuum ²⁾	mmH ₂ O	2.600	2.900
	mbar	260	290
Maximum air flow	l/min	5.683	6.567
	m ³ /h	341	394
Acoustic level ^{e)}	dB (A)	69	70
Environmental working temperature	°C	5 ÷ 40	
Dust bin capacity	l	50	
Wheels material		Rubber	
Weight	kg	141	
Packing weight	kg	156	
Dimensions - L x W x H (H .005 H .008)	mm	775 x 585 x 1.705 (1.905)	
Packing size - L x W x H (H .005 H .008)	mm	870 x 670 x 1.860 (2.015)	
Diameters:			
material inlet	mm	70	
air exhaust	mm	100	
wheels: chassis	mm	100 - 150	

FILTRATION DATA

	Default primary star filter		
	Surface area	cm ² - m ²	19.500 - 1,95
	Diameter	mm	460
	Dust Class ^{f)} Media ³⁾		M Antistatic polyester
	Filter cleaning		Ergonomic manual filter shaker
	Optional primary filter - cartridges kit - Variant 008		
	Surface area Diameter	cm ² - m ² mm	56.400 - 5,64 460
	Dust Class ^{f)} Media		M Antistatic polyester
	Compressed air consumption pressure	nl/min bar	48 4 ÷ 6
	Filter cleaning		Automatic cleaning system
	Upstream absolute filter - Variant 005		
	Surface area	cm ² - m ²	28.000 - 2,8
	Media		Glass fibre
	Dust Class ^{g)}		H14
	Efficiency M.P.P.S. ^{f) 4)}		99,995%
	Downstream absolute filter - Variant 045		
	Surface area	cm ² - m ²	82.000 - 8,2
	Media		Glass fibre
	Dust Class ^{g)}		H14
	Efficiency M.P.P.S. ^{g) 4)}		99,995%

Normatives: a) IEC60529; b) IEC600085; c) IEC60034-2-1; d) 2014/34/UE; e) EN60704-2-1; f) EN60335-2-69; g) EN1822

Notes:

¹⁾ Other input voltages upon request

²⁾ Maximum vacuum in continuous run

³⁾ Other materials available according to the material to be vacuumed

⁴⁾ With 0,18 µm particles

⁵⁾ "Pharma finishing": AISI 316L cleaned welding and inner mirror polished

MACHINE

KF30M.021	4 kW, 50 l capacity, grey RAL 9006 painted, 460 mm diameter three phase industrial vacuum cleaner
KF30M.021-60Hz	4,55 kW, 50 l capacity, grey RAL 9006 painted, 460 mm diameter three phase industrial vacuum cleaner

OUTFITS

001	AISI 304 stainless steel dust bin	I
001P	AISI 316L stainless steel dust bin - Pharma finishing ⁵⁾	
002	AISI 304 stainless steel dust bin and filtering chamber	I
002P	AISI 316L stainless steel dust bin and filtering chamber - Pharma finishing ⁵⁾	
003	Entirely made out of AISI 304 stainless steel	
003P	AISI 304 stainless steel completely made with AISI 316L stainless steel dust bin and filtering chamber - Pharma finishing ⁵⁾	
005	Upstream absolute filter (HEPA)	
006	Electric filter shaker with push-button	
006A	Automatic electric filter shaker	
007	Pneumatic filter shaker with push-button	
007A	Automatic pneumatic filter shaker (adjustable at switch on or at switch off)	
008	Automatic reverse jet cartridge filtering system	
008SS	Automatic reverse jet cartridge filtering system - version: AISI 304 stainless steel	
008P	Automatic reverse jet cartridge filtering system - version: AISI 316L stainless steel - Pharma finishing ⁵⁾	
045	Downstream absolute filter (HEPA) - version: painted	
045SS	Downstream absolute filter (HEPA) - version: AISI 304 stainless steel	
076	Bin overfilling machine switch off	
104	Remote on/off switch arrangement through dry contact onto processing machine electric control panel	
603	Disposal bag vacuum balance system for dust collection directly into plastic bags	